

KANDU TOWNHOMES

8163 LINCOLN AVE.

SKOKIE, ILLINOIS

ZONING ANALYSIS

GOVERNING CODES

2012 INTERNATIONAL RESIDENTIAL CODE
 2012 INTERNATIONAL BUILDING CODE W/ VILLAGE OF SKOKIE AMENDMENTS
 2012 INTERNATIONAL FIRE CODE W/ VILLAGE OF SKOKIE AMENDMENTS
 2012 INTERNATIONAL MECHANICAL CODE
 2012 INTERNATIONAL FUEL GAS CODE
 2014 INTERNATIONAL ENERGY CONSERVATION CODE
 2014 NATIONAL ELECTRICAL CODE W/ VILLAGE OF SKOKIE AMENDMENTS
 2014 STATE OF ILLINOIS PLUMBING CODE AS AMENDED APRIL, 2014

1. LOT AREA	9,5564.98 sqft
2. TOTAL BUILDING AREA	10,112.2 sqft
3. LANDSCAPING AREA	681.35 sqft
4. CONC. WALKS	877.83 sqft
4. DRIVEWAY & PARKING	2,916.00 sqft

ANTONIO FANIZZA ASSOC. LTD
 ARCHITECTS
 2363 LECANER LANE
 DEER PLAIN, ILLINOIS 60016
 TEL: (847) 823-5664 FAX: (847) 823-1664
 EMAIL: ANTONIO.FANIZZA@CCORCHITECTS.COM

© 2016 ANTONIO FANIZZA ASSOC. LTD.
 THESE DRAWINGS AND SPECIFICATIONS ARE PROPERTY OF ANTONIO FANIZZA ASSOC. LTD. AND ARE PREPARED FOR USE ON THIS SPECIFIC SITE AND FOR A SPECIFIC DATE AND SHALL NOT BE COPIED, OR REPRODUCED IN ANY FORM OR MANNER AVAILABLE WITHOUT WRITTEN AUTHORIZATION. UNAUTHORIZED USE IS NOT ALLOWED. IT IS FURTHER ADVISED PRIOR TO DRAWING USE, ALL FEES HAVE BEEN PAID IN FULL. FAILURE TO DO SO, THE USER WILL BE RESPONSIBLE FOR ALL COURT COST AND LEGAL FEES.

I HEREBY CERTIFY THAT THIS PLAN AND SPECIFICATION WAS PREPARED BY ME OR UNDER MY DIRECT SUPERVISION AND THAT I AM A DULY REGISTERED ARCHITECT UNDER THE LAWS OF THE STATE OF ILLINOIS AND THE VILLAGE OF SKOKIE. CODES AND ORDINANCES THEY ARE IN COMPLIANCE WITH ALL APPLICABLE CODES INCLUDING THE ENVIRONMENTAL BARBERS ACT (40-150) AND THE ILLINOIS ACCESSIBILITY CODE (23 ILCS 0005/0005) AS ENFORCED BY MY HAND AND SEAL.

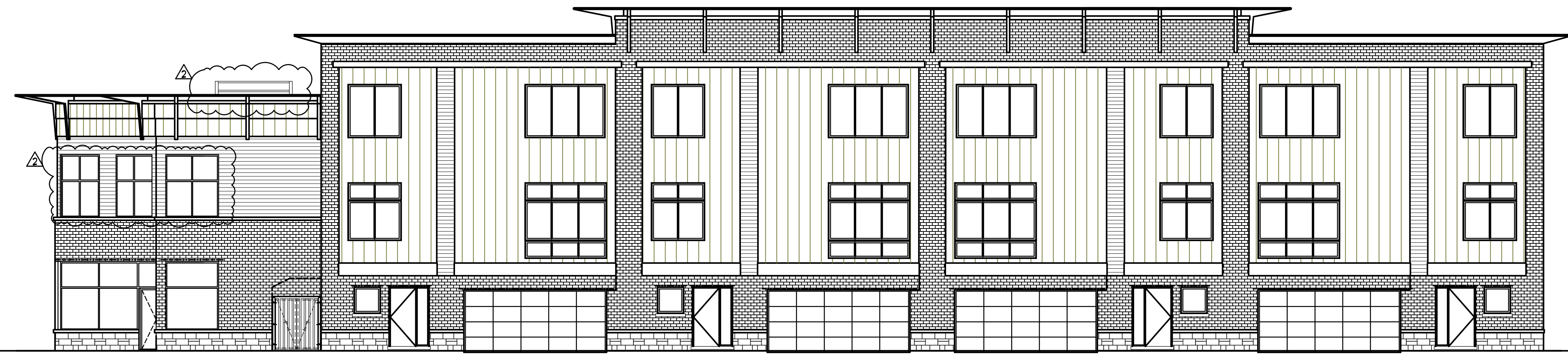
NO.	REVISION
1.	PER CITY COMMENT #20006
2.	PER CITY COMMENT #042801
3.	PER CITY COMMENT #062801
4.	PER DOT REQUIREMENTS #222801

CERTIFICATION AND SEAL

LEGEND SHEET

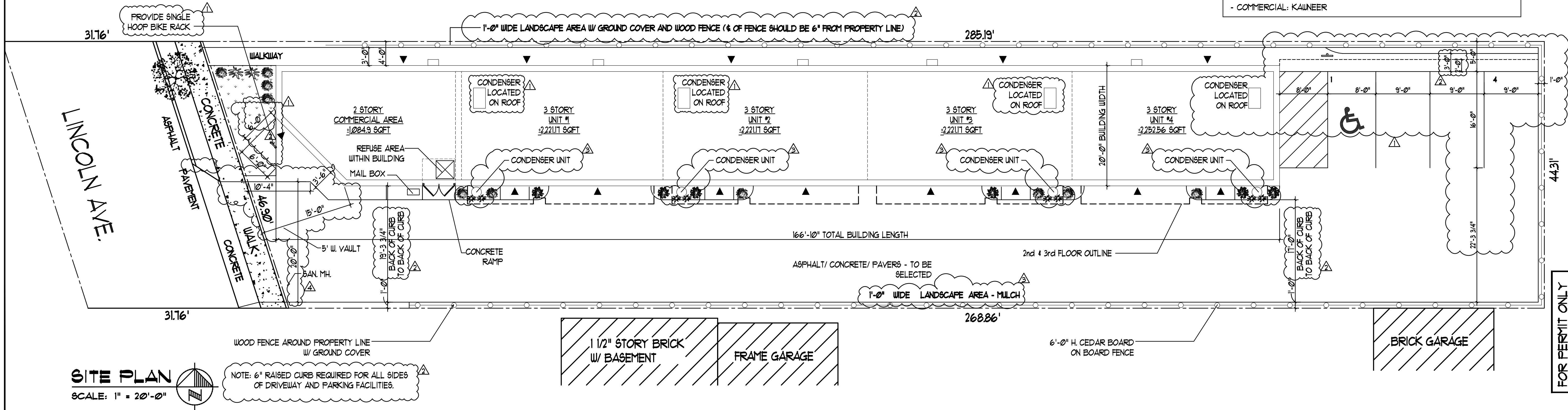
- T-1.0 COVER SHEET/SITE PLAN
- T-2.0 SPECIFICATIONS
- T-2.1 SPECIFICATIONS
- T-3.0 ADA SPECIFICATIONS
- T-3.1 ADA DETAILS
- L-1.0 LANDSCAPING PLAN & DETAILS
- A-1.0 KEY PLANS
- A-1.1 1st & 2nd FLOOR TYP. UNIT PLANS
- A-1.2 3rd FLOOR AND ROOF PARTIAL PLANS
- A-1.3 COMMERCIAL AREA PLANS
- A-2.0 ELEVATIONS
- A-3.0 BUILDING SECTIONS
- A-3.1 SECTIONS & DETAILS
- A-3.2 FLASHING DETAILS
- A-4.0 RESIDENTIAL DOORS & WINDOWS SCHEDULES
- A-4.1 COMMERCIAL DOORS & WINDOWS SCHEDULES
- E-1.0 ELECTRICAL PLANS
- E-1.1 ELECTRICAL NOTES
- M-1.0 MECHANICAL PLANS FOR RESIDENTIAL UNIT
- M-1.1 MECHANICAL PLANS @ COMMERCIAL AREA
- P-1.0 PLUMBING PLANS FOR RESIDENTIAL UNIT
- P-1.1 PLUMBING PLANS @ COMMERCIAL AREA
- S-1.0 STRUCTURAL PLANS
- S-1.1 STRUCTURAL PLANS
- S-1.2 STRUCTURAL NOTES

NOTE:
 ALL WINDOWS & DOOR ARE BY:
 - RESIDENTIAL: PELLA ARCHITECTURE
 - COMMERCIAL: KAUNEEER



PROPOSED SOUTH (FRONT) ELEVATION

SCALE: 1/8" = 1'-0"



DRAWING NAME: COVER SHEET/SITE PLAN
 PROJECT NAME: KANDU TOWNHOMES
 8163 LINCOLN AVE
 SKOKIE, ILLINOIS

released to const. job no. 1651
 scale AS SHOWN
 date 10.14.2016
 drawn by WU
 checked by AF
 sheet

T-1.0